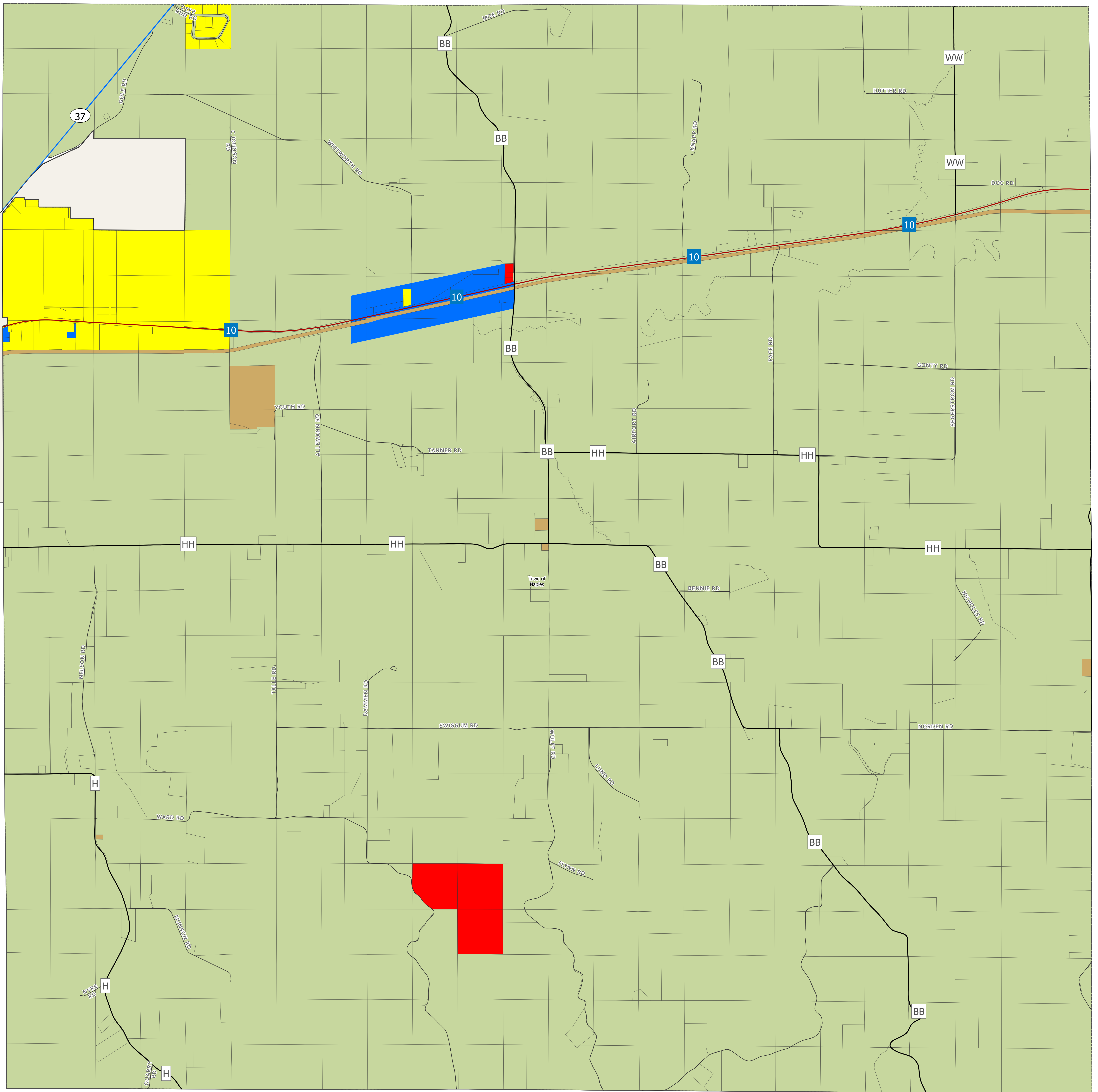




Product of the Buffalo County GIS Department

TOWN OF NAPLES ZONING DISTRICTS MAP

Est. 07/23/2018



Buffalo County Zoning Department

This official county zoning districts map is a visual representation of the zoning district boundaries as created by the individual Town Boards and as approved by the Buffalo County Board of Supervisors on July 23, 2018. Contact the Zoning Department for Floodplain, Shoreland and wetland zoning.

0 0.15 0.3 0.6 Miles
Scale: 1:12,000
Printed: 11/6/2020 12:36 PM

- Zoning Districts**
- AGRICULTURE/NATURAL RESOURCE – 40 (ANR-40)
 - AGRICULTURE/NATURAL RESOURCE – 20 (ANR-20)
 - AGRICULTURE/NATURAL RESOURCE – 10 (ANR-10)
 - AGRICULTURE/NATURAL RESOURCE – 5 (ANR-5)
 - AGRICULTURE/NATURAL RESOURCE – 5 (ANRT-5)
 - COMMERCIAL
 - CONSERVATION
 - INDUSTRIAL
 - RESIDENTIAL

- Roads & Boundaries**
- US Highway
 - State Highway
 - County Road
 - Town Road
 - Cities and Villages